

EVA

Evolution Value Automation



- ▶ Play out
- ▶ Spot Management
- ▶ Multi Radio
- ▶ Audio Editing
- ▶ Streaming
- ▶ Post Production
- ▶ Digital Recording
- ▶ Scheduling
- ▶ Multi User



Overview

AS YOU WANT IT

Each Radio station has its own needs, discover how easy it is to adapt **EVA** to your needs.

ONE FOR ALL

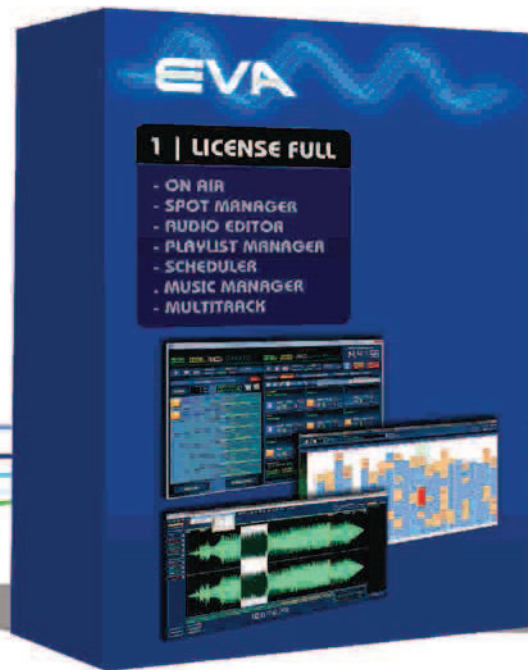
EVA is a "radio suite" so you do not need any other software to manage your radio.

RELIABILITY

Through the use of relational databases (SQL) **EVA** can handle a huge amount of data safely and with extreme speed.

EXPERIENCE

20 years of research and development in the radio business make **EVA** a scalable product with hundreds of features to simplify your work.



Broadcasting, Digital/analog recording, splitting, Smart Opener, displaying the name of the song. Partial and/or precise and reliable daily scheduling based on user-defined filters. Advertising managed over multiple radio stations and directions, also with automatic generation of timetables, separation of product categories, concentration, etc., Track Editor, Multitrack, Voice Recorder, Live Recorder.

EVA is the ideal solution for the most demanding DJ. It manages up to 8 assignable Play Out channels to 8 different sound cards or one multichannel sound card.



Every Play Out channel can broadcast two audio tracks, allowing a mix that is precise to one thousandth of a second.

Enjoy!

You can test and listen to the mix of tracks on air with the next track, all in real-time with the visual Mix Editor integrated with the broadcast.



EVA is an integrated system for the comprehensive management of radio stations, from post-production to broadcast.

The use of the plural “radio stations” is not accidental. The system was designed to be used in multi-radio (i.e. you can manage multiple stations simultaneously) and multi-user mode, so multiple users can simultaneously perform operations on the same archives, thus increasing productivity and speeding up data entry.



SMS

Thanks to SMS Manager you can display during broadcast or on other stations on the network the messages received by a GSM modem.

FEEDS AND NEWS A CLICK AWAY

Browse the web and news through the integrated browser in the broadcast window.

SPEAKERS

A module designed for speakers. It shows all the information relating to subsequent events, clearly scanning the countdown of the songs, intro, SMS, advertisement cluster, etc.

TIME SIGNAL

The time signal is composed of the installation of three

audio files: musical backing track, hours and minutes that are mounted from time to time by the system. You can also have a unique audio file for each hour-minute, or create customized time signal lists by selecting them in the programming phase.

NEWS

The news recording procedure is fast and versatile. The broadcast can be recorded in a single block or for the individual news report so that you can compose various broadcasts during the day. The ability to define a time limit on each news report avoids the danger of broadcasting dated releases or repeats.

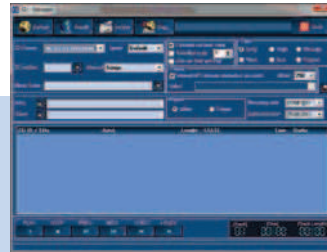
With easy



Live Rec, developed for podcasts, is an indispensable tool for managing repetitions. You just push a button and it does the rest. It can stop and restart a new recording automatically at each commercial break. The finished product is therefore a repetition ready to be retransmitted, to be reprogrammed by integrating the future commercial.



Calmly modify the musical line-up in real-time, no need to open other windows to search for audio tracks with integrated archives, you can just drag 'n drop to add your favourite tracks. Custom filters also allow you to instantly find the tracks that you're looking for.



With **Instant Player** you can run backing tracks and effects with the touch of a button. You can assign a virtually infinite number of elements and save them. Users thus have their own configuration for their personal backing tracks, their effects, their jingles, their own profiles.



Split

With **Split manager** you can broadcast different advertising and events in different areas (up to 16). The duration of each area is optimized to use annoying buffers as little as possible, managing and selecting them through a revolutionary generation algorithm. Thanks to the extreme versatility, this module can also be purchased separately because it is compatible with other systems.



EXTERNAL SOURCES

EVA is able to manage a variety of configurations of electrical contacts to and from other devices such as satellite receivers, audio switches, etc.

LONG RECORDING TIME

With **GIGASTORE** you can also simultaneously record up to 12 sources.

DOWNLOADS

More and more stations are making use of external services for news, horoscopes, etc. With Internet Grabber you can program the dates and times to perform the downloads.



Playlist Manager



MULTITRACK

Have fun creating audio montages in post-production, you can run them on the air without any rendering, thus avoiding the wait time.

SYNDICATION

- **EVA** can also automate syndicated radio with:
- Synchronization of all or part of the archives;
- Differentiation of programming for each affiliate or a group of affiliates;
- Synchronization of national and local advertising programs;
- Automatic download of national and local news;
- Authorization for access to different software for each affiliate;
- Sets the maximum

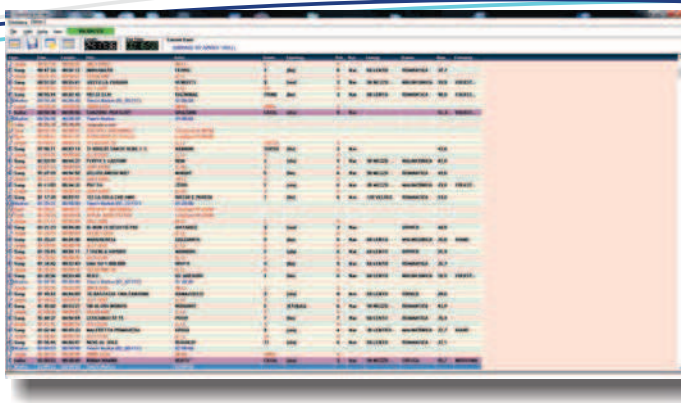
With well organized sections and sophisticated search algorithms, you can effectively manage your music library. Unlike other systems with which you must choose packets of songs to broadcast, with **EVA** you avoid this annoying problem simply by setting the conditions with user-defined filters, which will create playlists that are always different.

For example, you can set a filter that selects songs in the "CHEERFUL" mood, released in the last 3 months, type POP or DANCE, with beats per minute (BPM) greater than 120, and so on; you can enter many other parameters. The playlist generated will contain only songs that meet all these conditions.



The obvious advantage is that each new song entered in the archive will be automatically selected for broadcast if it satisfies the conditions. These advanced selection criteria may also be applied to other songs in the archive, including all other types of tracks: jingle, liners, commercial spots, etc.

Scheduler



With **EVA** you can generate a full daily schedule that also displays future programming. It is an indispensable tool for the professional music programmer and for you, if you want absolute control over broadcasting and the number of reproductions assigned to each track. You build only the structure, inserting at each clock only the filters of the songs that you wish to program or manually inserting the tracks that you desire. **EVA** takes care of the rest and before validating the broadcast you can replace the songs using the many features, allowing you to avoid pointless repetition.

cluster of advertising. The panel can be used to decide the maximum length of any advertising strip for each affiliate;

- Synchronization of national live broadcasts via satellite;
- Synchronization of national live broadcasts via internet (TCP/IP);
- Activation of buffers in the absence of satellite signals

